

# SHOT OVER

# M2 UTILITY



## ADVANCE YOUR AERIAL INSPECTION

### Be More Effective & Efficient

SHOTOVER's M2 Utility system introduces a significant step forward in capabilities, upgradability, supportability, and cost effectiveness of airborne inspection operations. Equipped with the latest in visible band, infrared, and inertial sensor technology, and highly automated for even single-pilot operation, the M2 Utility ensures maximum results with minimal effort while seamlessly integrating with GIS workflows.

Unlike traditional systems, SHOTOVER's 5th-generation gimbal is a true 6-axis gyro-stabilized platform, uniquely capable of stabilizing all horizon motion even when aimed straight down at nadir. This capability enhances anomaly and fault detection - by both human inspectors and AI routines - while capturing higher-quality data for more actionable insights.

Exclusive to the M2 Utility is the computer-controlled camera steering and pointing enabling crews to cover more area in less time. During flight the system will automatically follow rights-of-way, pipelines, power lines, towers - any georeferenced object that uses common GIS formats including KML, KMZ and shapefiles. The M2 Utility will even follow sequenced segments and knows when to turn down a tap line or point to the next tower so the crew can focus on inspections and safe flight.

### SYSTEM HIGHLIGHTS

- Exclusive 6-axis design enhances threat detection & improves GIS map projections
- Augmented Reality visualizes GIS data including underground or hidden structures
- Video & still photo sensors feature zoom optics to adjust GSD or working distance
- Automatic following & geo-pointing of georeferenced data objects
- Extensive metadata geo-tagging supports custom data to fit any workflow
- Catalog, manage, distribute and archive collected data with optional cloud-based storage
- Configurable payload for optimal performance and future tech upgrades
- Connect over the Internet for updates, new features & remote servicing

### APPLICATIONS

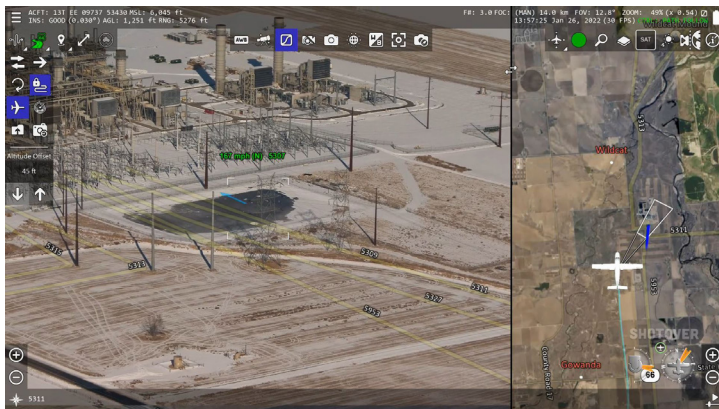
- Vegetation Management
- Power & Pipeline Inspection
- Asset Inspection
- Aerial Survey
- Mapping
- Photogrammetry
- Utility & Telecommunications



# COMPLETE UTILITY PACKAGE

SHOTOVER's M2 Utility system is a complete solution with built-in 4K video, digital photos, and metadata recording, as well as our exclusive Augmented Reality System. Information-rich AR overlays allow operators to 'see' hidden infrastructure and asset objects such as underground pipelines in real-time. The AR information also provides an effective way to visualize and survey new projects – gain awareness of terrain conditions and other potential unforeseen factors before starting the work.

- Geo-tagging metadata supports custom labels to optimize workflow
- Easily plan and transfer data between GIS workstations & aircraft
- Standard GIS database includes options for loading custom user data
- Record in full 4K resolution while operating and streaming in HD
- Built-in simulator tool keeps operators proficient while saving flight hours
- Optional secure cloud-based service to archive, collaborate, and distribute video
- Choice of options for carry-on/carry-off or permanent installations
- Portrait mode video layout support ideal for newer glass cockpits
- Simplified cabling requires only power, Ethernet, and GPS antenna
- Compatible with most FAA and EASA approved aircraft mounts
- Connect over the Internet for updates, new features & remote servicing
- Non-ITAR and fully NDAA compliant



# SYSTEM SPECIFICATIONS

## PAYLOAD OPTIONS

<b>Color Video</b>	4K Ultra-HD or 1080p Full HD Lens options to 2° FOV GSD up to 2mm @ 500ft
<b>Color Photo</b>	Up to 61 Megapixel Full Frame Lens options to 3200mm FL (equiv. FF) GSD up to 1mm @ 500ft
<b>IR OGI</b>	Tuned High Sensitivity Optical Gas Imager Includes radiometric temperature sensing
<b>IR Video</b>	Long Life HOT Mid-Wave Infrared 1280 x 720 pixels HD video Lens options to 1.7° FOV
<b>SWIR</b>	Large format Short-Wave Infrared 1280 x 720 pixels HD video Choice of fixed or continuous zoom lenses
<b>Video Formats</b>	2160p, 1080p, 1080i, 720p
<b>Image Formats</b>	JPEG, RAW, GeoTIFF

## GIMBAL SYSTEM

<b>Type</b>	6-axis stabilization with built-in vibration isolation
<b>Az Coverage</b>	360° continuous
<b>EI Coverage</b>	+30° to -120°
<b>Roll</b>	+/- 50°
<b>Navigation</b>	Fully integrated IMU & GPS receiver
<b>Size</b>	16.4" x 19.1" (417mm x 485mm) excluding swept area
<b>Weight</b>	Less than 108 lbs (49 kg)
<b>Power</b>	22-29 VDC (per MIL-STD-704E)
<b>Environment</b>	-20 to +55C

## INTERFACES

<b>Video</b>	2x SDI, 3x IP Stream
<b>Data</b>	Ethernet, USB 3.0, serial ports, audio
<b>Metadata</b>	MISB compliant KLV, extended dataset
<b>CODECs</b>	H.264, H.265

**UNRIVALED SUPPORT AND WARRANTY  
1 YEAR, 100% MONEY-BACK GUARANTEE**

10.3.2025